

FORM No. 1.

Q 14-25<sup>2</sup>

Q 14-21<sup>1</sup>

William Reed

Titus Reed

Timothy Reed

A. Kerns

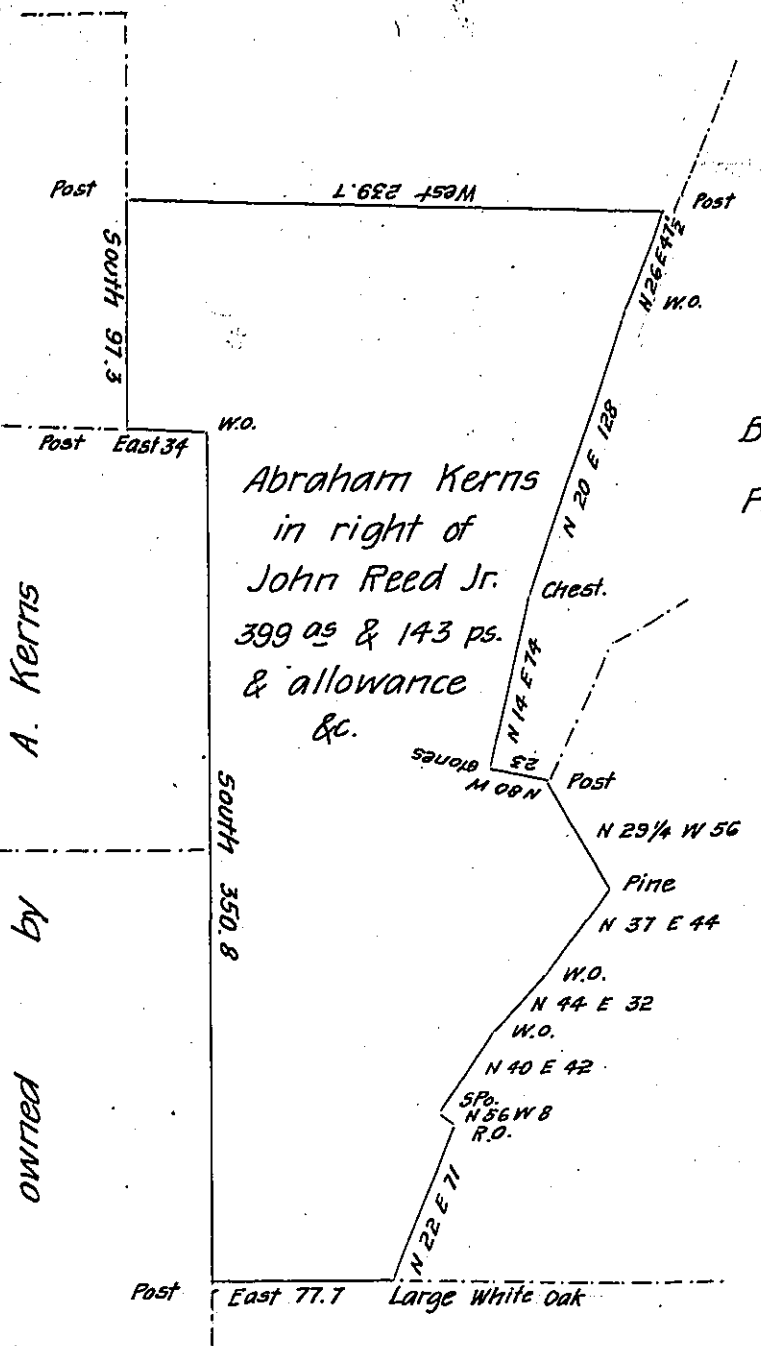
by

owned

all

Now

Thos Reed



Abraham Kerns  
in right of  
John Reed Jr.  
399 as & 143 ps.  
& allowance  
&c.

Basil Riggs now  
Philip Wigfield

Joseph Moss's Imp't

D-23-55

John Ward

John Reed

Situate in Southampton Township Bedford County Containing 399  
 acres and 143 perches and allowance of Six P<sup>c</sup> Cent & Originally Surveyed  
 for John Reed Jr. the 10<sup>th</sup> day of October 1794 on Warrant dated the 21<sup>st</sup>  
 the 10<sup>th</sup> day of October 1835  
 day of February 1794. Resurveyed for Abraham Kerns on order granted by  
 the Board of Property dated the 21<sup>st</sup> day of February 1832

Robert Stuart D.S.

To the Surveyor General.

IN TESTIMONY that the above is a copy of the original remaining on file in  
 the Department of Internal Affairs of Pennsylvania, made  
 conformably to an Act of Assembly approved the 16th day of  
 February, 1833, I have hereunto set my Hand and caused  
 the Seal of said Department to be affixed at Harrisburg,  
 this twenty third day of October 1906

*Isaac D. Brown*  
 Secretary of Internal Affairs.